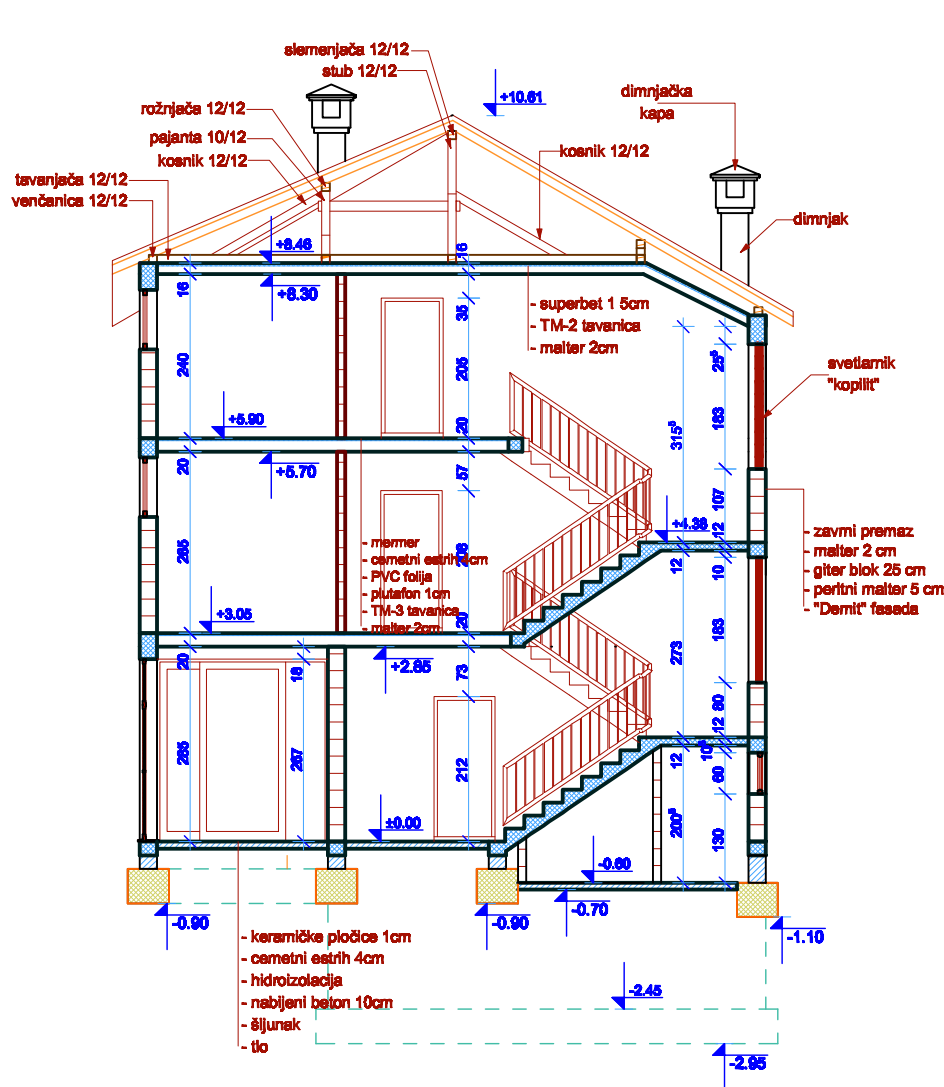
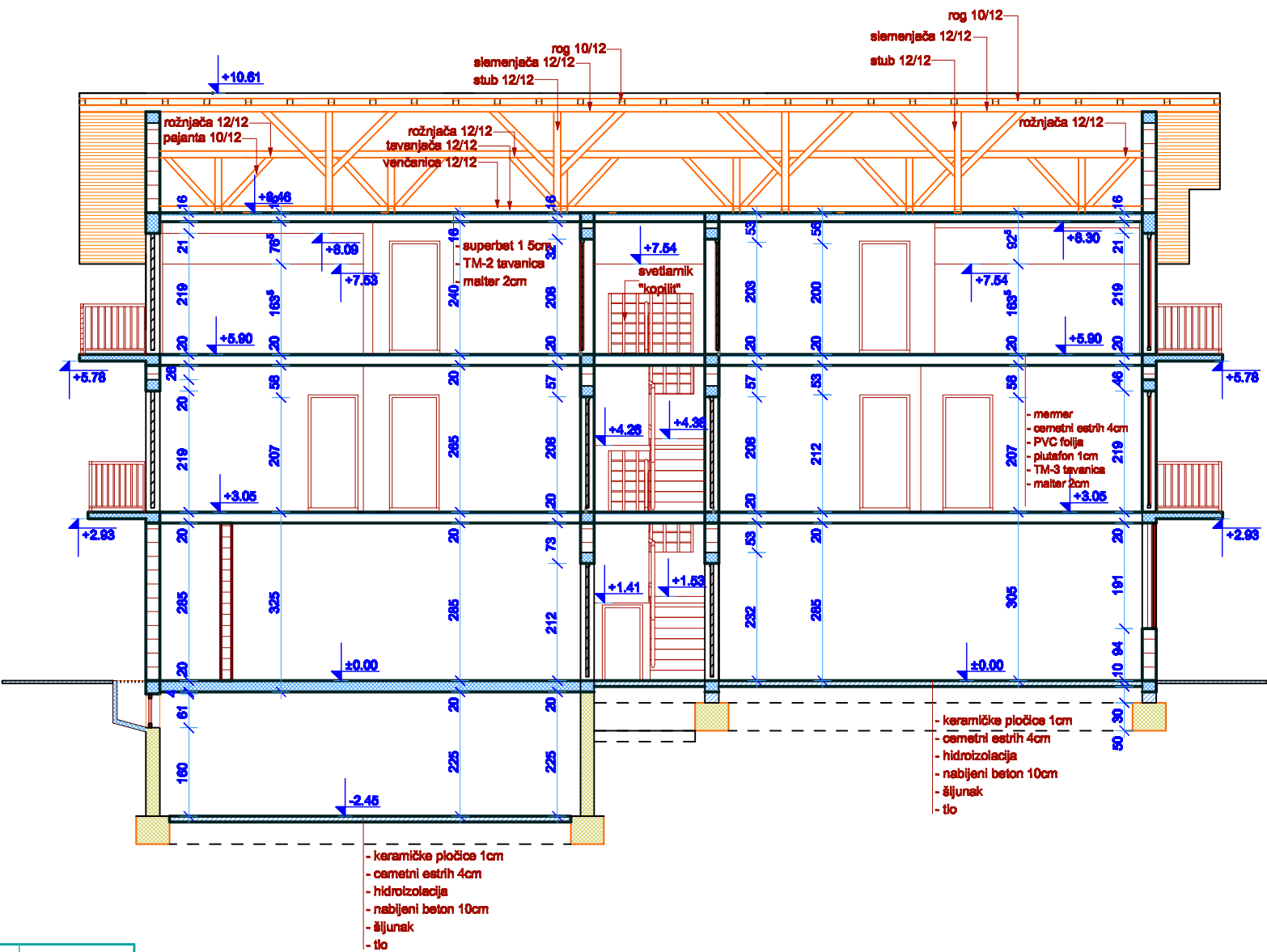


PRESEK A-A



| Br. | LEGENDA    | dim.   |
|-----|------------|--------|
| 1   | ROG        | 10/12  |
| 2   | ROŽNJAČA   | 12/12  |
| 3   | SLEMENJAČA | 12/12  |
| 4   | VENČANICA  | 12/12  |
| 5   | GREBENJAČA | 12/12  |
| 6   | UVALNJAČA  | 12/12  |
| 7   | TAVANJAČA  | 12/12  |
| 8   | STUB       | 12/12  |
| 9   | KOSNIK     | 12/12  |
| 10  | ZATEGA     | 12/12  |
| 11  | KLEŠTA     | 2/5/15 |
| 12  | PAJANTA    | 10/12  |

PRESEK B-B



| GARDEN Studio, Požarevac Cane Babović 1 |   |               |
|---|---|---------------|
| Investitor:                             | NOVICA JEVTIĆ                           |               |
| vrata tehničke dokumentacije:           | POSTOJEĆE STANJE                        |               |
| oznaka i naziv dela projekta:           | 1 - projekat arhitekture                |               |
| naziv crteža:                           | PRESECI                                 |               |
| odgovorni projektant:                   | Nataša Momirović<br>licenca 300 1618 03 |               |
| datum: 12. 2018.                        | razmera: 1:100                          | broj lista: 6 |